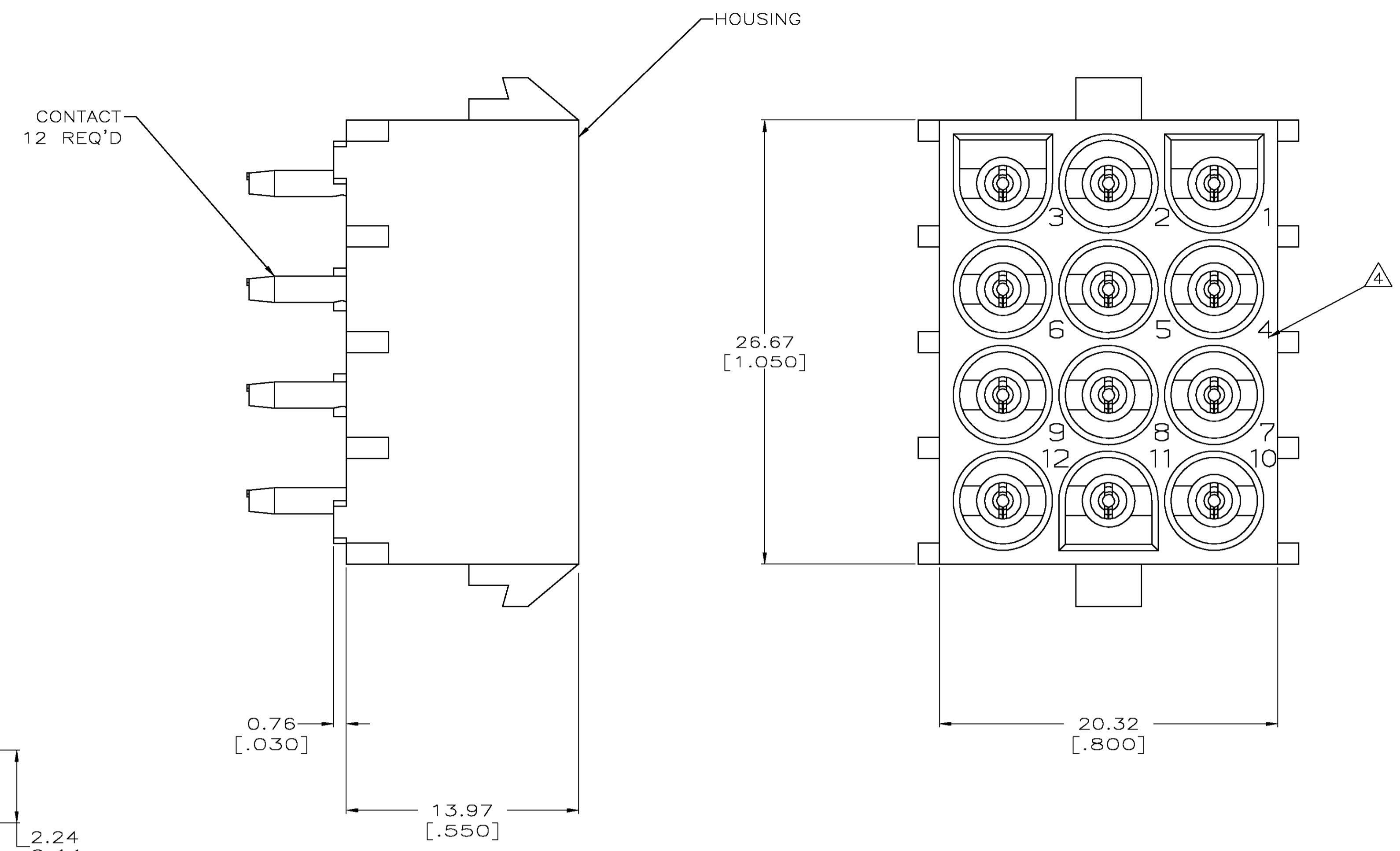
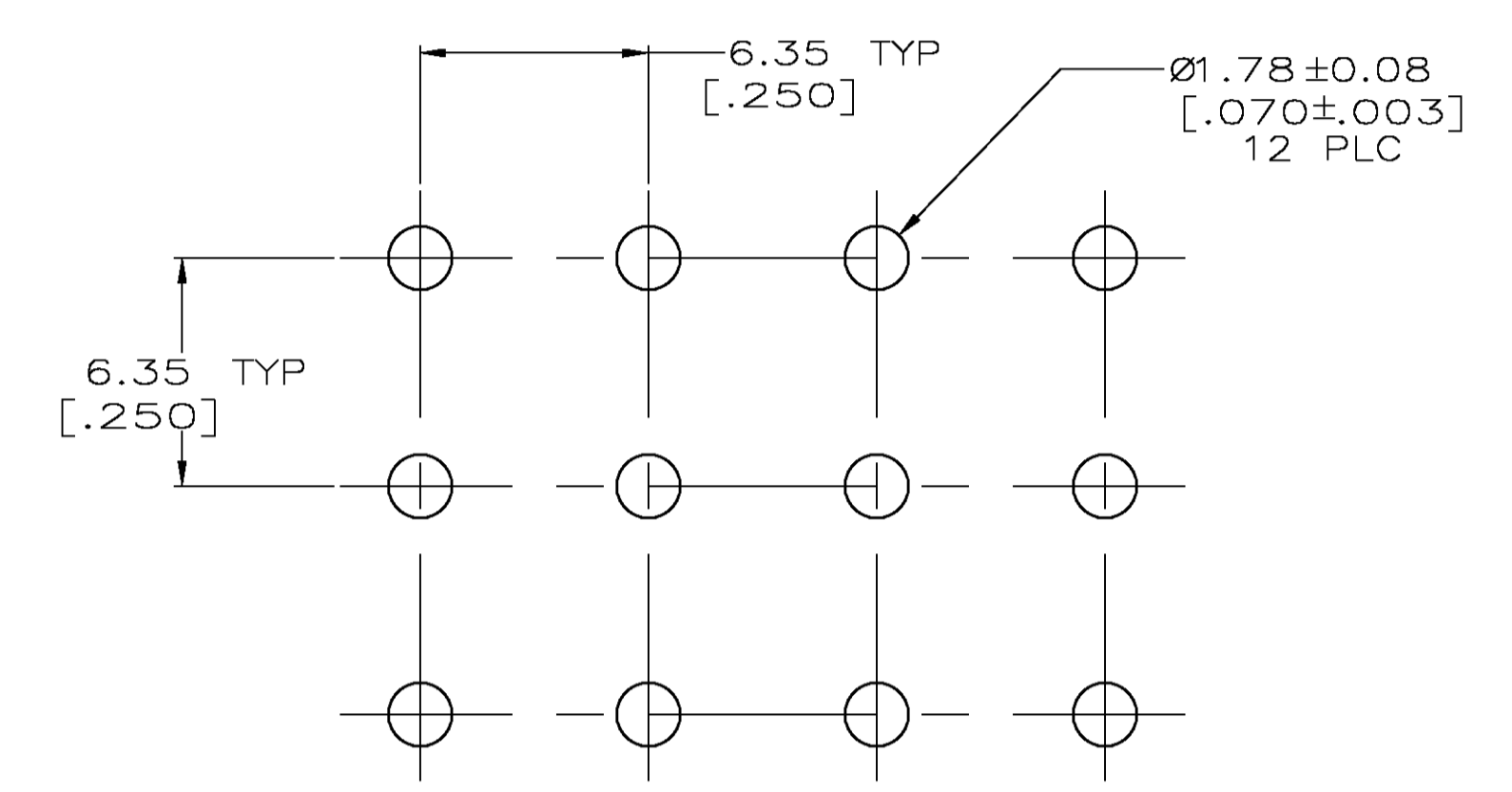


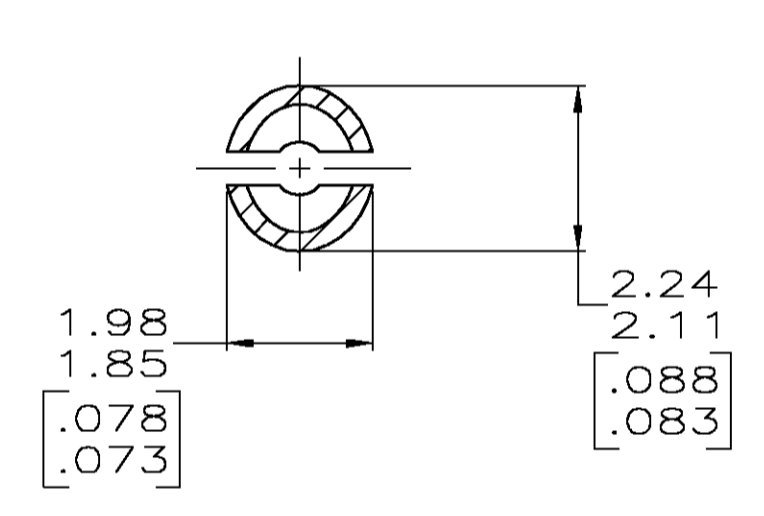
LOC		DIST		REVISIONS			
P	LTR	DESCRIPTION	DATE	BY	APVD		
T		REVISED PER 061B-1094-04	24JAN85	KW	SR		



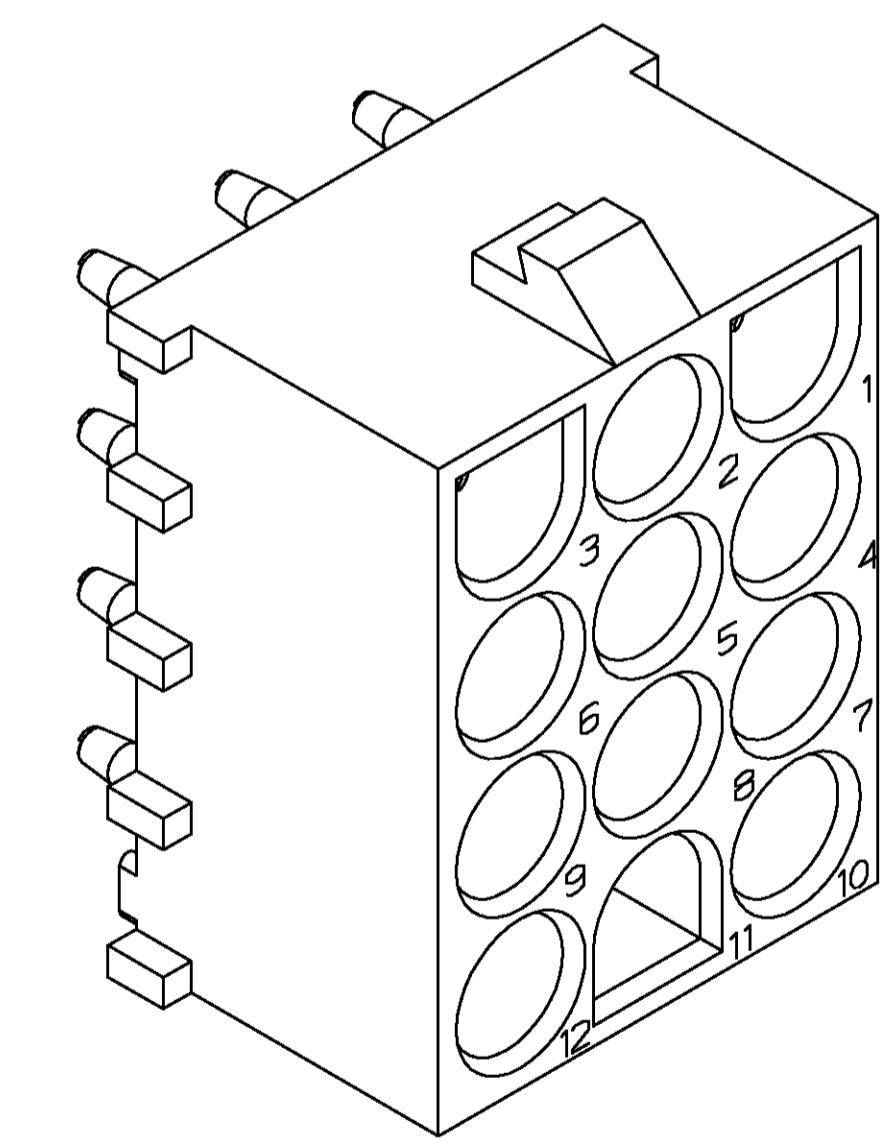
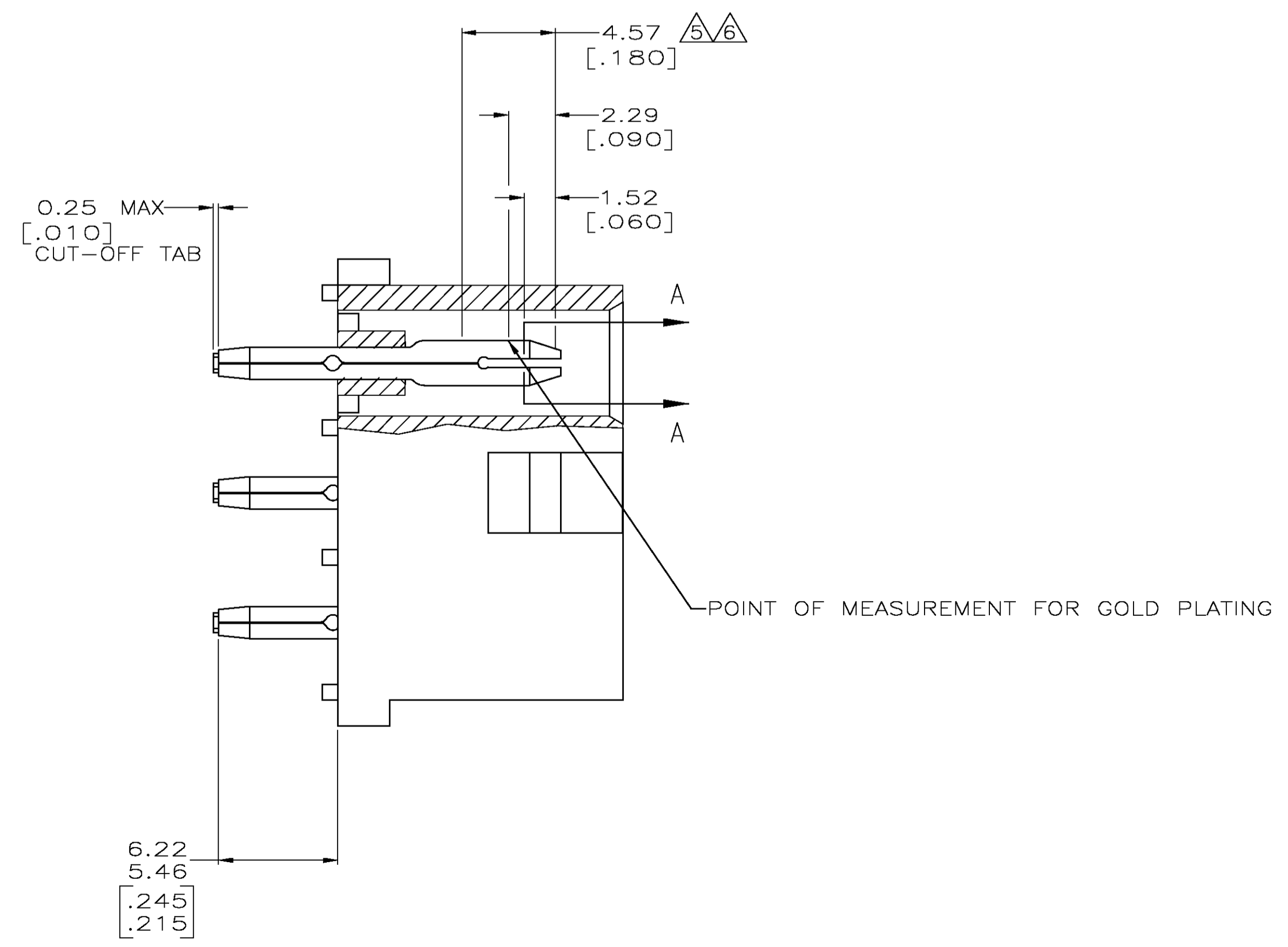
- PARTS COMPLY WITH AMP SOLDERABILITY SPECIFICATION 109-11-3.
- MATES WITH 480708 USING SOCKET CONTACTS.
- DIMENSIONS IN BRACKETS ARE IN INCHES.
- $\Delta$  CIRCUIT IDENTIFICATION CHARACTERS ARE ADJACENT TO THE INDICATED CAVITIES, BUT LOCATION AND ORIENTATION MAY DIFFER FROM PRINT.
- $\Delta$  CONTACT IS PLATED OVERALL WITH 0.00127[.000050] NICKEL, THEN 0.00076[.000030] GOLD OVER CONTACT LENGTH INDICATED AND MATTE TIN LEAD ON SOLDER TAIL END.
- $\Delta$  CONTACT IS PLATED OVERALL WITH 0.00127[.000050] NICKEL, THEN 0.00076[.000030] GOLD OVER CONTACT LENGTH INDICATED AND MATTE TIN ON SOLDER TAIL END.



RECOMMENDED MOUNTING HOLE PATTERN FOR A 3.18 [.125] THK P.C. BOARD



SECTION A-A  
SCALE 10:1



3-DIMENSIONAL MODEL NTS

MATERIAL	FINISH	MATERIAL	COLOR	PART NO
PH BRZ	$\Delta$	NYLON, UL94V-0	NATURAL	350587-4
PH BRZ	$\Delta$	NYLON, UL94V-0	NATURAL	350587-2
PH BRZ	PRE-TIN	NYLON, UL94V-0	NATURAL	350587-1

PIN		HOUSING	
0 PLC	± -	DIN	1-19-98
1 PLC	± -	CHK	1-19-98
2 PLC	± 0.13[.005]	NAME	TYCO ELECTRONICS
3 PLC	± -	APVD	1-19-98
4 PLC	± -	NAME	M. TRULL
ANGLES	± -	PRODUCT SPEC	
		APPLICATION SPEC	
		SIZE	A1
		WEIGHT	
		CAGE CODE	00779
		DRAWING NO	350587
		RESTRICTED TO	
		CUSTOMER DRAWING	

